



Parla, Secure Cloud Email

Secure Email, Instant Messaging, Calendar, Contacts, Tasks, File sharing and Notes from any device

The 1st Secure Email and Instant Messaging from a European Security Vendor



Parla is a secure cloud-based communication platform with up to 30 GB of mailbox storage space, suitable from small organizations to large enterprises thanks to its scalable provisioning. Parla provides the right email, instant messaging and collaboration environment with **fully integrated security layers protecting companies and employees from phishing, spam, malware and other external threats.**

Parla ensures business digital assets are kept safe and confidential at all times. In the present circumstances, where data transfer protocols may raise concerns amongst

corporations (Safe Harbour agreement has been ruled invalid by the European Court of Justice and must be renegotiated for 2016), the Spamina's solution Parla provides companies with the peace of mind that all the data is stored, safeguarded and compliant with the demanding EU regulations in terms of data protection and data privacy.

Parla Webmail

PARLA provides a cloud-based secure corporate email service with up to 30 GB storage capacity. PARLA has been designed in order to deliver email service anywhere and from any device with internet access. Whether in or out of the office, your mailbox will always be available. You can open the mailbox via the Outlook plugin developed by Spamina, from any iOS, Android or Windows operating device and from any internet browser. The **Webmail** platform enables users to manage email, calendar, file sharing, tasks and grants access over other user's mailboxes amongst other things. A fully operational, always-on

email service is a key tool in today's organizations; however security is an aspect that must not be ignored.

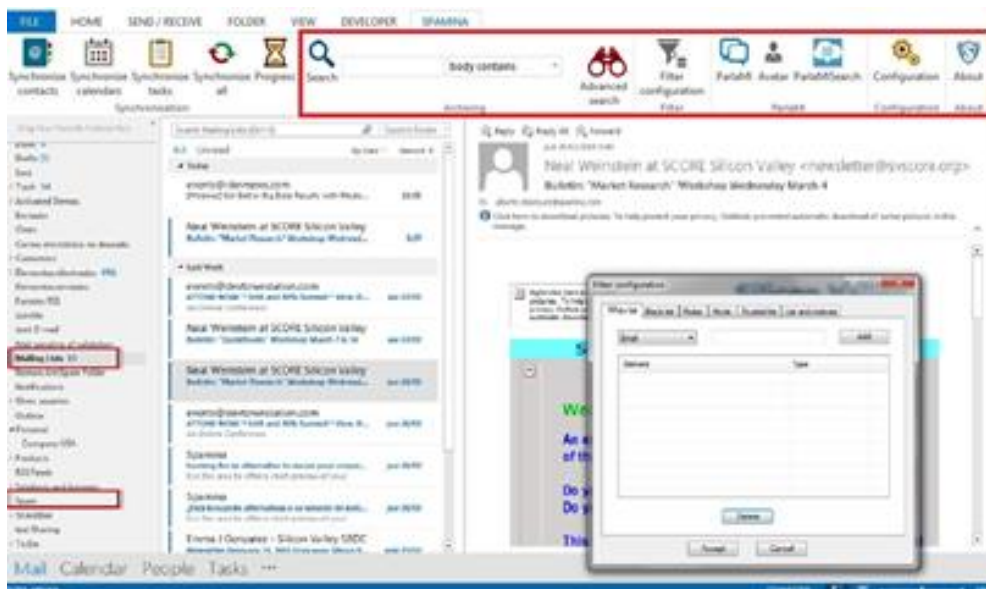
PARLA is embedded with **Cloud Email Firewall**, bringing the concept of secure email to the next level. Comprehensive antispam functionality with best-of-breed Spamina proprietary technology detection – **Simile Fingerprint Filter®** - with the option for users and administrator of fine-tuning multiple features, in accordance with the needs of each corporation. **SFF®** deploys spam detection techniques that ultimately differentiate and separate automatic bulk mailing from the legit corporate email which is efficiently delivered. Multilayer antimalware & antivirus filters are included for advanced threats real time detection. Optionally some other extra AV filters can be added on top to enhance the malware detection within the email content. Cloud Email Firewall enables business continuity as well, relying on three pillars -email spooling, 28 days email backup and webmail interface-. Enterprise-class email service always ready without compromising the security.

Outlook Plug-in

Parla features **full compatibility with Microsoft Outlook, Apple Mail and other standards-based POP/IMAP/iCal/CalDAV clients**. With its built-in capability Parla provides two-way synchronization of mail, contacts, tasks, and calendar between Outlook and Spamina Parla Cloud. Employees that enjoy working with Outlook as their base email client will not notice a difference when checking their email, creating their notes or managing their tasks.

The **plugin for Outlook is available for 2007, 2010, 2013 and 2016 versions**. This enables users to configure the same features that could be configured from the webmail before, as well as more features such as:

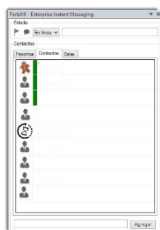
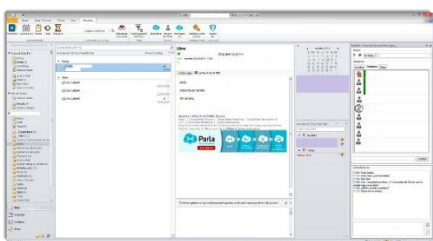
- Synchronizing calendars, contacts and tasks from webmail to Outlook and vice versa
- Change all your data profile (name, address, password, etc.)
- Configure all filter data (white/black lists, rules, filtering mode warning messages, etc.)



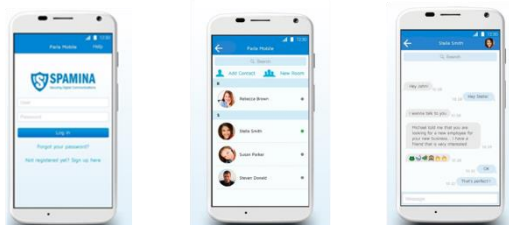


Secure Corporate Instant Messaging

Parla is integrated with an instant messaging feature that enables users to communicate in real time individually, or collectively by creating public or private chat rooms. Parla will always ensure the safety of the company's digital communications ParlaMI adds push notifications, file sharing from the Outlook add-in and webmail **videoconference call**. Instant messaging includes archiving and filtering options on demand.



Also available app for Android and iOS devices



Calendar, address book & collaboration

Easily manage your contacts, share your address book with other users, create recurrent events in your calendar, set tags, manage and share tasks, create and share notes, check busy/available status and more with Parla calendar, address book, tasks manager and notes module. Stay organized and on schedule with our calendar, get event reminders while having a quick and simple view of your meetings with our easy to use interface. Attach files or docs to your event so that you have the right materials when your meeting starts and easily invite other members to your upcoming meetings. Calendar sharing makes easy finding time for the people you work with and helps employees to stay productive by removing access barriers.

File sharing

As an integrated document manager, Parla File Sharing eliminates the need for separate document management tools and streamlines the file sharing process across email reducing unnecessary stress on the corporate network while saving storage space. With File Sharing you can share folders across users and upload multiple files of any type in one click from your desktop, File Sharing will identify each file type uploaded and will provide an automatic icon association. Users will receive a file sharing notification as soon as they receive a new file. File Sharing is extremely useful for quickly previewing file content thanks to its built-in file viewer.

Mobile Device Management (MDM) – Optional



Parla includes a new feature to manage mobile devices, MDM.

Parla uses the ActiveSync protocol, which doesn't need any additional download, just with a Wi-Fi connection or active mobile data, Parla will synchronize all your data automatically. The domain administrator has the capacity to configure different options for their domain users such as allowing or denying the camera use, Bluetooth, Wi-Fi or Web browser, allowing or denying the downloading of attachments, allowing or denying the sending of SMS text messages, compelling to encrypt mobile devices, using a PIN or set a number of seconds of inactivity before lock.

Integration with Cloud Email Encryption & DLP (optional)



Cloud Email Encryption is an easy to use solution that enables companies to ensure the confidentiality and to avoid the leakage of digital communications via email and instant messaging. When an encrypted email is sent out by a Parla user, the recipient receives an "advice of dispatch" to register into the Encryption Platform for reading the email content. The recipient will then be able to reply from this platform with another encrypted email so the communication goes on in a secure manner.

Integration with Cloud Email Archiving (optional)



Cloud Email Archiving provides immediate, easier email retention and capture in order to ensure compliance with data protection regulations. The manipulation of the archived emails is prevented by rendering its content immutable (forensically sound): email can then be used for legal proceedings. Emails are automatically indexed, stamped for integrity and archived for up to 10 years. Its CEA's engine enables complex searches and the indexing process is tolerant to emails with format errors, ensuring that all received email is archived.

Parla Migration Tool

It is a Windows application that facilitates the entire process of migrating mailboxes, calendars, contacts and tasks from Microsoft Exchange accounts to Parla This tool was specifically designed for partners.

Export Information of the services contracted by customers

From the partners console you can download a file CSV with the information of the licenses that have been contracted for each Company: Company, Service, Date of activation, Expiration Date, Contracted licenses, Licenses in use and others.

Spelling Checker in Parla Web.

Allows checks when you compose an email in Parla Web and also select multiple dictionaries in different languages, for example Spanish, English, Catalan, Portuguese, French or German.

Extended Coverage for Auto-complete addresses in Para Web.

The global address list (GAL) of the Company is now available when creating invitations to meetings and to share folders, calendars and other resources.

Resource sharing groups in Parla Mailbox.

Sharing calendars and contact folders in Parla Mailbox is now possible with a group. These groups which may be for example departments or working groups, defined by the administrator and are automatically available to users when they accede to Parla

web. In future releases the Add-In for Outlook will be extended to facilitate interaction of sharing resources on the groups

Corporate Image and unified services between several distributors related image with white label.

Suppose that the same white-label service mode is provided in different regions (countries, for example) by a (sub) distributor different. In this case with this version you may a group these distributors to share the same configuration white-label (look & Fell , service configuration, etc) but each will maintain its own list of customers, will configure their reports, etc

Parla Features

Messaging

Freemium, 2GB, 10GB or 30GB mailbox

Unlimited data transfers

Powerful AJAX based webmail interface:

- Cloud Email Firewall security module fully integrated
- Conversation view
- Optimized mobile device view (iPad & Tablet)
- Advanced search capabilities
- Drag & Drop capabilities
- Multiple personal address books plus corporate global address list
- Simultaneous calendar management
- Calendar free/busy information
- Search tasks by status
- Advanced tasks/notes search capabilities
- Bookmarks cloud storage & management
- Mailbox capacity management
- Mailbox usage alerts
- Integrated file viewer
- Access spam items directly from mailbox
- Full cloud email service: No software or hardware installation required
- Corporate distribution lists

Compatibility and Integration

Outlook native integration (2007, 2010, 2013, 2016)

Mobile Device Management Integrated - Optional

Cloud Email Encryption and DLP - Optional

Cloud Email Archiving - Optional

Email, Address Books, Calendars and Notes smartphone synchronization (iPhone, Android and Windows Mobile)

Outlook calendars, contacts, tasks and notes synchronization – via plugin

Native over-the-air calendar, contacts, tasks and notes using Outlook 2013 using ActiveSync

Calendar and contact synchronization using CalDAV / CardDAV

Import / Export calendars using iCalendar

Import / Export contacts using CSV/vCard

Import / Export notes using CSV/vNotes

Import your bookmarks from Firefox/Internet Explorer

- Secure Enterprise Instant Messaging, ParlaMI

Collaboration Environment

Share mailbox elements:

- Calendars
- Address Books
- Tasks
- Notes
- Files

About Spamina

SPAMINA, is a European-based security company that develops and provides corporations with flexible and Secure Digital Communications. Managing and mitigating cyber-crime related risk is critical. Widely known electronic communications means such as email, as well as the increasingly used instant messaging, are channels where the corporate digital assets can be jeopardized.

Simile Fingerprint Filter® proprietary technology protects corporate networks from advanced and zero-day threats. Spamina provides with a safe communication environment where business continuity, service scalability and cost-effectiveness are ensured.

Our cloud services range from enterprise secure email platform, enterprise mobile management, email & IM gateway protection to archiving and encryption & DLP solutions for legal compliance.

A cloud environment involves storage and transfer of digital information. Spamina is subject to the most demanding EU regulations in terms of data protection and is committed to ensuring the highest security standards for digital safeguard.

More information:

www.spamina.com

Phone: +34 91 368 77 33

